

Career opportunities

- **Scientific Researcher** in academic or pharmaceutical laboratories dedicated to improving knowledge of human health, and finding prevention strategies and cures for diseases.
- **Project Managers** or **Leaders** able to manage development up to production and marketing of innovative products in the fields of pharmaceuticals, nutrition and agri-food products.

Associated academic institutions, & companies

- Research units affiliated to CNRS, INSERM, INRAe
- Intl Research Center in Health & Mobility
- University Hospital & cancer center
- Cancéropôle Lyon Auvergne Rhône-Alpes
- Pharmaceutical Co. (Théa, Sanofi, Novartis,...)
- Agri-food Co. (Nestlé, Danone, Limagrain...)
- Biotech (Crantech)

Financial supports for (upon selection)

- International incoming students
- International internships

Eligibility criteria

- Bachelor in Biology/Life sciences
- English language certification
- Academic results with a CV and a cover letter

Main objectives

Understanding physiology and metabolism of human body in its **healthy and diseased** state to evolving new tools for **improving longevity and quality of life**.

Strengths

- You will be fully equipped to solve **critical research challenges**, whether it be as part of a group or individually.
- The international internship programme is key to **opening mindsets to global solutions in health and disease**, and by doing scientific research in a domestic or foreign laboratory.
- You will strengthen your scientific skills and learn the latest scientific methods.
- You can expect to embark on **international-level careers** and/or pursue PhD programmes.

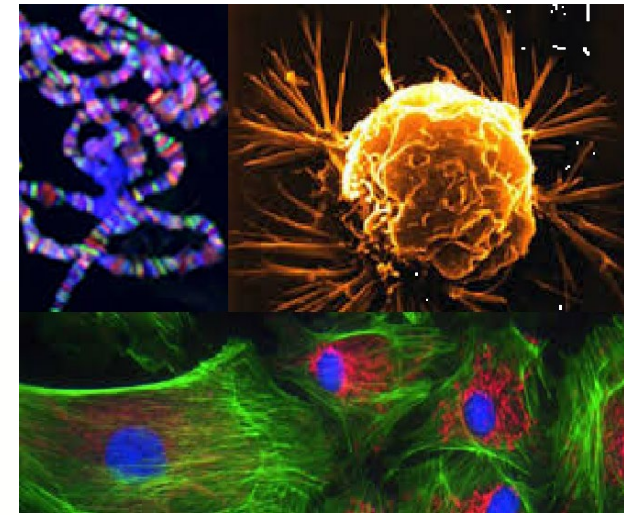


Contacts Pr Laurent Morel
Laurent.morel@uca.fr

Pr Corinne Malpuech-Brugère
Corinne.malpuech-brugere@uca.fr

MASTER of SCIENCES in **BIOLOGY & HEALTH**

Graduate Track
Nutrition, Health & Mobility



MASTER in **BIOLOGY & HEALTH**

Labelled as

Graduate Track
Nutrition, Health & Mobility



UCA UNIVERSITÉ
Clermont Auvergne

Practical training and professional integration

Progressive learning in a professional environment :

- a 3-wks internship in a training university lab (M1)
- a 3-mos internship (academic lab / company) (M1)
- a 6 mos internship (academic lab /company) (M2)



Expected skills

Scientific skills

- To know how to contextualise a scientific issue
- To Develop a rigorous scientific reasoning
- To implement the experiment
- To interpret and report the results

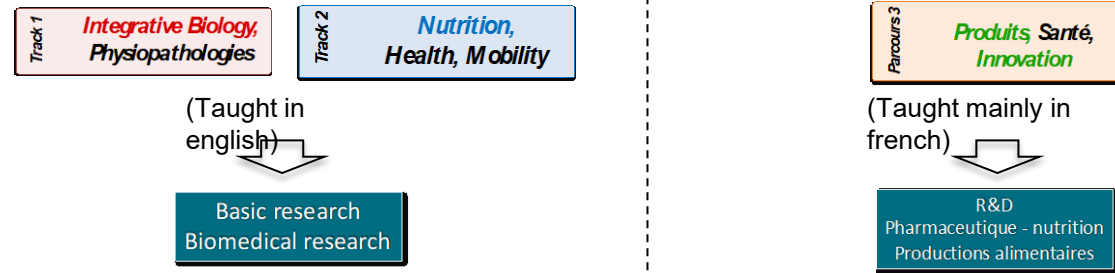
Relational and organizational skills

- To work in a team and autonomously
- To work in an English-speaking context
- To know and to respect ethics rules

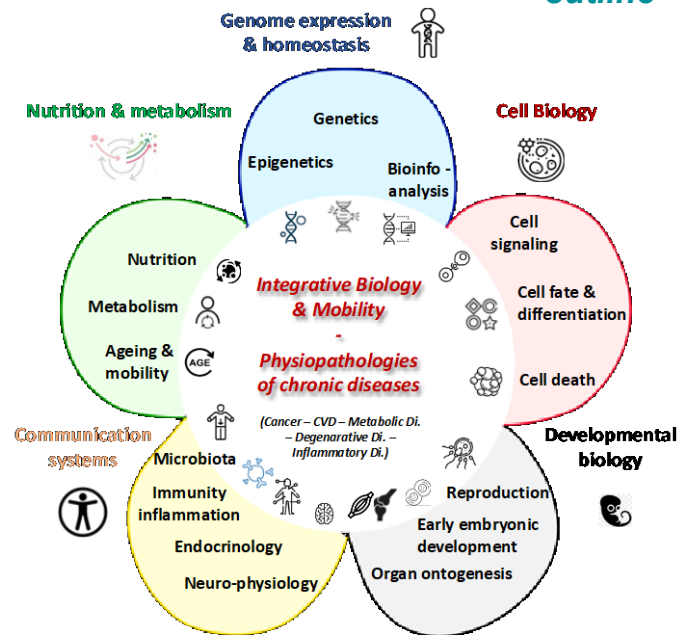
Teaching format

- Combination of lectures, seminars, tutorials and working in group.
- large periods dedicated to practical and professional training

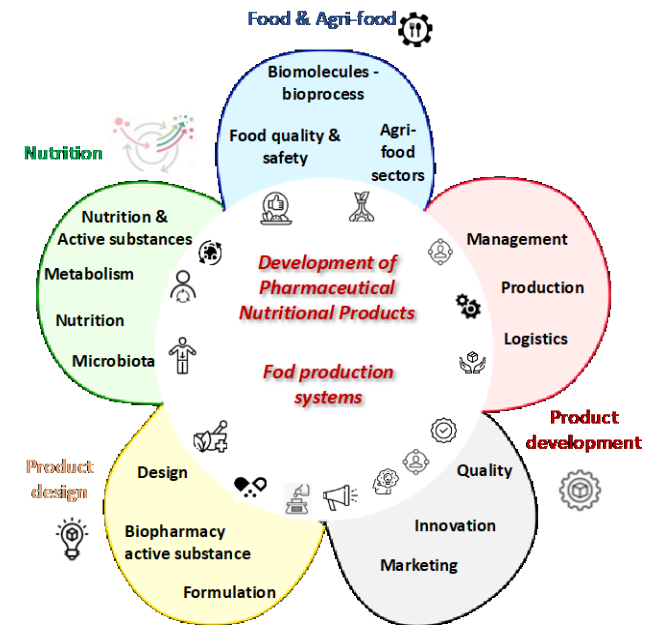
Three programmes



Programmes outline



Knowledge and skills in these relevant themes are deepened for their comprehensive mechanisms and preventive aspects in the chronic diseases context (cancer, metabolic diseases, cardio-vascular diseases, pain...).



This programme deals with the basic science concepts and tools but also with applied teaching to integrate Biotech, Agri- and Pharma- industries